

In collaboration with The National WWII Museum



# EASY COMPANY ENGLAND TO THE EAGLE'S NEST

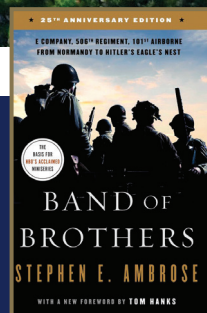
APRIL 26–MAY 8, 2025

Aldbourne • Portsmouth • Normandy • Eindhoven • Arnhem  
Bastogne • Clervaux • Luxembourg City • Haguenau • Dachau  
Berchtesgaden • Zell am See



Book early and save!

Join our most popular tour, based on the best-selling book, *Band of Brothers* by Museum founder Stephen E. Ambrose, featuring original cast members from the award-winning HBO miniseries.



Dear Bulldog Alumni:

In 1980, Nick Mueller (President and CEO Emeritus of The National WWII Museum) persuaded his best friend and University of New Orleans colleague Stephen Ambrose to lead their first overseas tour—a trip from the Normandy D-Day beaches to the Rhine River. For the next 20 years, the duo continued to run tours while Ambrose began collecting hundreds of oral histories from D-Day veterans, including interviews with surviving members of the famed Easy Company.

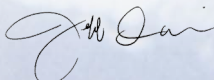
Of course, the rest is history. Ambrose's research and interviews led to best-selling book *Band of Brothers*, which would years later be adapted into the HBO miniseries that brought the story of Easy Company to millions of viewers worldwide. Perhaps no other single work in the past three decades has had such an impact or made such an imprint on the American memory of World War II.

Ambrose and Mueller's passion for preserving the stories of D-Day veterans led to the idea of building a National D-Day Museum in New Orleans. Their overseas tours tracing the wartime route of the "Band of Brothers" helped raise funds for the Museum, which would open in 2000 and quickly expand its mission to include the entire war effort.

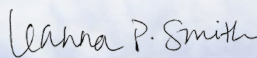
Today, the Easy Company tour is the most popular educational travel program offered by The National WWII Museum. The exclusive itinerary features sites referenced in the Easy Company veteran interviews conducted by Ambrose and his team at the Eisenhower Center for American Studies. This journey remains core to the Museum's mission—offering rare access to sites, extraordinary guides, and quaint regional accommodations. As the authority on World War II, the Museum draws upon its collection of oral histories, photographs, and artifacts to deliver the most memorable, emotional, educational, and extraordinary travel experiences.

We hope you'll join us on this personal journey to the beaches, bridges, cities, and villages where the legendary Easy Company fought the crucial D-Day battles and changed the course of history. Every tour features an original cast member from the miniseries, making this tour a truly unique experience.

Sincerely,



Jeff Davis  
Executive Director  
Mississippi State University  
Alumni Association



Leanna P. Smith  
Assistant Director  
Mississippi State University  
Alumni Association



Hear their stories. Learn their names.  
Stand where history was made.



Bridge over the Rhine, Nijmegen  
Courtesy of Everett Collection.



*Band of Brothers* actor James Madio points at Frank Perconte's plaque on the Airborne Memorial Wall at the D-Day Experience Museum in Normandy.  
Courtesy Susannah Fields.

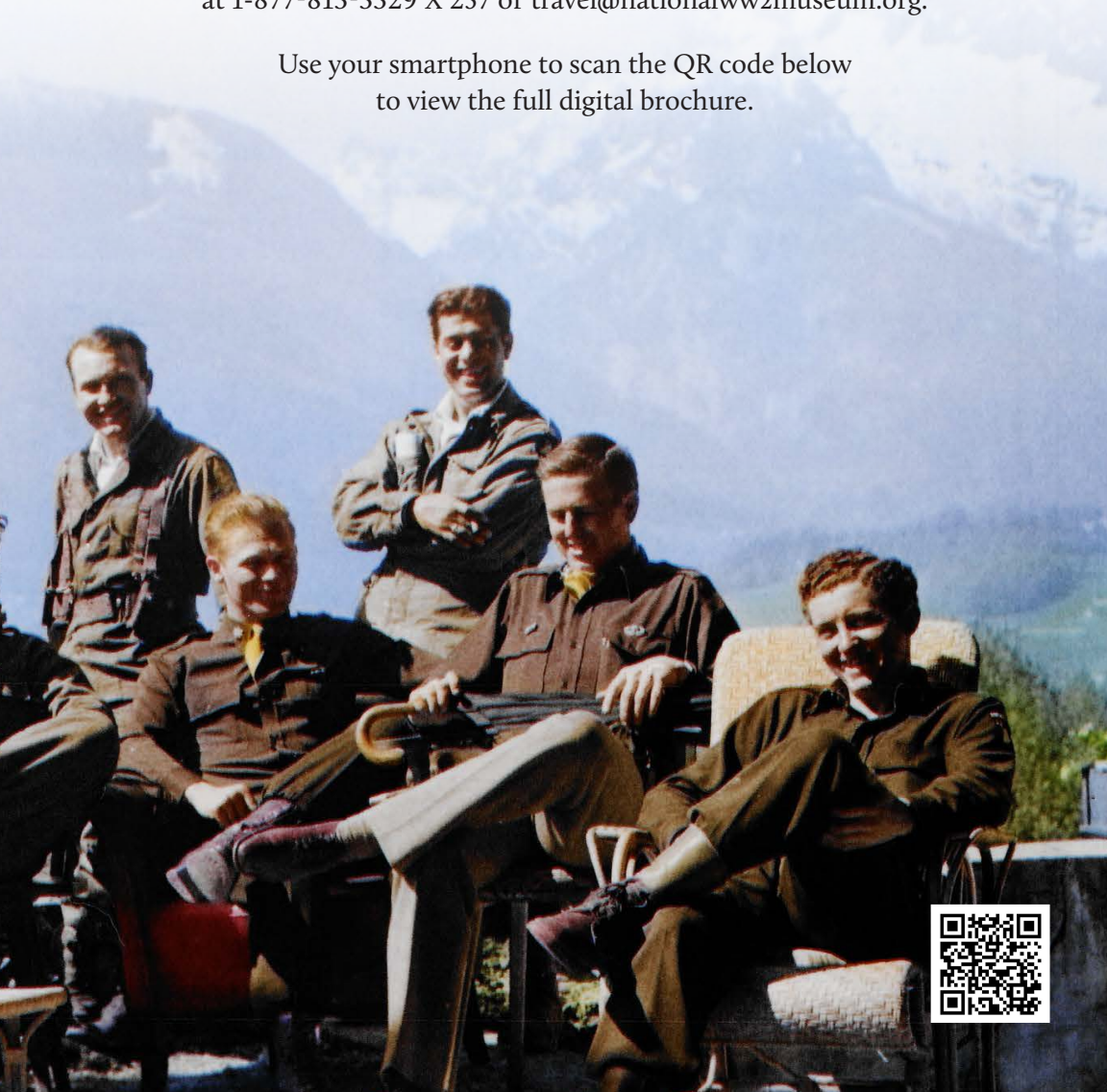


Maj. General Maxwell D. Taylor, commanding officer of the 101st US Airborne Division, September 17, 1944

## NOW ACCEPTING BOOKINGS

Let us help you plan your journey into history by contacting us at 1-877-813-3329 X 257 or [travel@nationalww2museum.org](mailto:travel@nationalww2museum.org).

Use your smartphone to scan the QR code below to view the full digital brochure.



# BRINGING HISTORY TO LIFE

## Why travel with The National WWII Museum?

- Visit up to 27 countries covering all theaters of World War II
- Travel with the authority on WWII educational travel
- Illuminating guides, best-selling authors, and the world's foremost experts in history on tour with you
- Exclusive access to Museum artifacts and oral history collection
- 16 overseas American Battle Monuments Commission cemeteries and memorials plus 189 museums on our itineraries
- Effortless travel and personal attention
- Handpicked accommodations and delectable cuisine

Photo: Luxembourg American Cemetery.



**Now accepting bookings.**

Let us help you plan your journey into history by contacting us at 1-877-813-3329 X 257 or [travel@nationalww2museum.org](mailto:travel@nationalww2museum.org).

# EASY COMPANY

## ENGLAND TO THE EAGLE'S NEST

APRIL 26–MAY 8, 2025

13 days | ~~\$8,799~~ **\$8,299\*** double occupancy, ~~\$10,499~~ **\$9,999\*** single occupancy

*\*When booked by June 28, 2024. \$329 per person taxes and fees are additional.*

### Tour Inclusions

Travel in the company of a cast member from the HBO miniseries *Band of Brothers* (Actor will be announced to travelers prior to departure)

Full-time logistical tour manager

Expert local battlefield guides

Roundtrip airport transfers (when arriving & departing on scheduled group tour dates)

Boutique hotel accommodations in prime locations

Private, first-class, air-conditioned motor coach transportation

VIP access to sites not offered on other tours

Entrance fees to all sites, museums, and historic attractions in itinerary

Video oral history presentations from the Museum's collection

Gratuities to guides, drivers, porters, and servers

Personal listening devices on all included touring

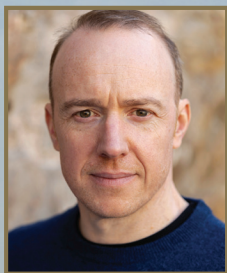
12 Breakfasts, 6 Lunches, 1 Reception, and 8 Dinners

Beer, wine, and soft drinks with included lunches and dinner

Informative map book including useful battlefield maps and archival images to be used throughout your journey

Personalized luggage tags and customized name badge

### Featured Actors



**Robin Laing**  
Pvt. Edward 'Babe' Heffron



**James Madio**  
Sgt. Frank Perconte



**Shane Taylor**  
Eugene G. 'Doc' Roe Sr.



**Engage. Reflect. Explore.**  
Scan the QR code to book online!

# The Itinerary

## DAY 1 • ARRIVE IN LONDON / TRANSFER TO ALDBOURNE, ENGLAND

Arrive in London Heathrow Airport (LHR) / Transfer to Aldbourne / Explore the training areas of Easy Company / Aldbourne walking tour accompanied by local villagers

*Accommodations: Donnington Valley Hotel & Spa (L, R, D)*

## DAY 2 • PORTSMOUTH / NORMANDY

Fort Nelson, Portsmouth / Golden Lion Pub / Cross the English Channel by ferry / Arrive Normandy

*Accommodations: Le Lion d'Or (B, L, D)*

## DAY 3 • NORMANDY, FRANCE

La Fière / Sainte-Mère-Église / The Airborne Museum / Brécourt Manor / Sainte-Marie-du-Mont / Marmion Farm / Utah Beach / Utah Beach Museum

*Accommodations: Le Lion d'Or (B, D)*

## DAY 4 • NORMANDY, FRANCE

Beuzeville-au-Plain / Carentan / Dead Man's Corner Museum / The church at Angoville-au-Plain / Free time in Bayeux

*Accommodations: Le Lion d'Or (B, L)*

## DAY 5 • NORMANDY, FRANCE

Pointe du Hoc / Omaha Beach / Normandy American Cemetery and Memorial / Special "Farewell to Normandy" dinner

*Accommodations: Le Lion d'Or (B, L, D)*

## DAY 6 • TRANSFER TO THE NETHERLANDS

Travel by coach to the Netherlands / Free time in Amiens, France / Group dinner in Eindhoven

*Accommodations: Hotel Pullman Eindhoven Cocagne (B, D)*

## DAY 7 • EINDHOVEN / ARNHEM / NIJMEGEN

Tour American areas of Operation Market Garden / Tour of Arnhem and "The Bridge Too Far"

*Accommodations: Hotel Pullman Eindhoven Cocagne (B, L)*

## DAY 8 • THE ARDENNES

Optional walking tour of Eindhoven or morning at leisure / Netherlands American Cemetery / Travel to Clervaux, Luxembourg

*Accommodations: Hotel Koener (B, D)*

## DAY 9 • BASTOGNE

Battle of the Bulge Monument / Tour Easy Company's foxholes in the Bois Jacques / Bastogne Barracks / Bastogne War Museum

*Accommodations: Hotel Koener (B)*

## DAY 10 • LUXEMBOURG CITY / HAGUENAU

Luxembourg American Cemetery and Memorial / Haguenau / Overnight in Stuttgart

*Accommodations: Maritim Hotel Stuttgart (B, L)*

## DAY 11 • DACHAU / ZELL AM SEE

Dachau Concentration Camp / Transfer to the Bavarian Alps

*Accommodations: Grand Hotel Zell am See (B, D)*

## DAY 12 • BERCHTESGADEN

Tour Hitler's Eagle's Nest / Afternoon free in Zell am See

*Accommodations: Grand Hotel Zell am See (B, L, D)*

## DAY 13 • FLIGHTS HOME FROM MUNICH

Transfer to the Munich International Airport (MUC) for your independently scheduled flights home (B)



Use your smartphone to scan the QR code and view the full digital brochure.

## EXTEND YOUR JOURNEY!

Optional Two-Night Pre-Tour Extension Program

# CHURCHILL'S LONDON

\$1,999\* per person double occupancy, \$2,759\* single occupancy

*\*\$129 per person taxes & fees are additional.*



Churchill War Rooms



Aerial view of Chartwell, home of Sir Winston Churchill

## Tour Highlights

Three nights at the historic Rubens at the Palace Hotel in the heart of London

Explore Chartwell, Sir Winston Churchill's countryside manor

Experience the continuing influence of war on the world  
at Imperial War Museum-London

Discover the Churchill War Rooms constructed beneath the streets  
of Westminster during World War II



## Book early and save!

Save up to \$1,000 per couple when booked by June 28, 2024. Contact us at 1-877-813-3329 X 257 or [travel@nationalww2museum.org](mailto:travel@nationalww2museum.org).

**Book early and save \$1,000 per couple!**

Call 1-877-813-3329 X 257 • Email: [travel@nationalww2museum.org](mailto:travel@nationalww2museum.org)



Tour guest captures a photo of James Madio and some WWI re-enactors in Normandy, France. Photo courtesy Kathleen Lloyd.

The National WWII Museum  
945 Magazine Street  
New Orleans, LA 70130

NONPROFIT  
AUTO  
US POSTAGE  
PAID  
NEW ORLEANS, LA  
PERMIT NO. 2748