



**THE MILL**  
at Mississippi State University

600 Russell Street  
STARKVILLE  
662-325-7300  
[www.themillatmsu.com](http://www.themillatmsu.com)







## HISTORIC ARCHITECTURE. MODERN CONVENIENCES.

Built in 1902, Starkville's historic cotton mill is now a premium, unique setting for special events, conferences, and meetings. The Mill features over 12 distinctive meeting areas, 10,000 square feet of flexible event space that accommodates up to 1,000 guests.

Host your seminar, class, or conference in The Mill's historic facility for a break from the ordinary. Our exposed beams, original brick, and hardwood flooring showcase the building's century-old history. But don't be fooled by our classic setting – The Mill's state-of-the-art amenities offer the technology you need to host a seamless business event.

**CONTACT US.**

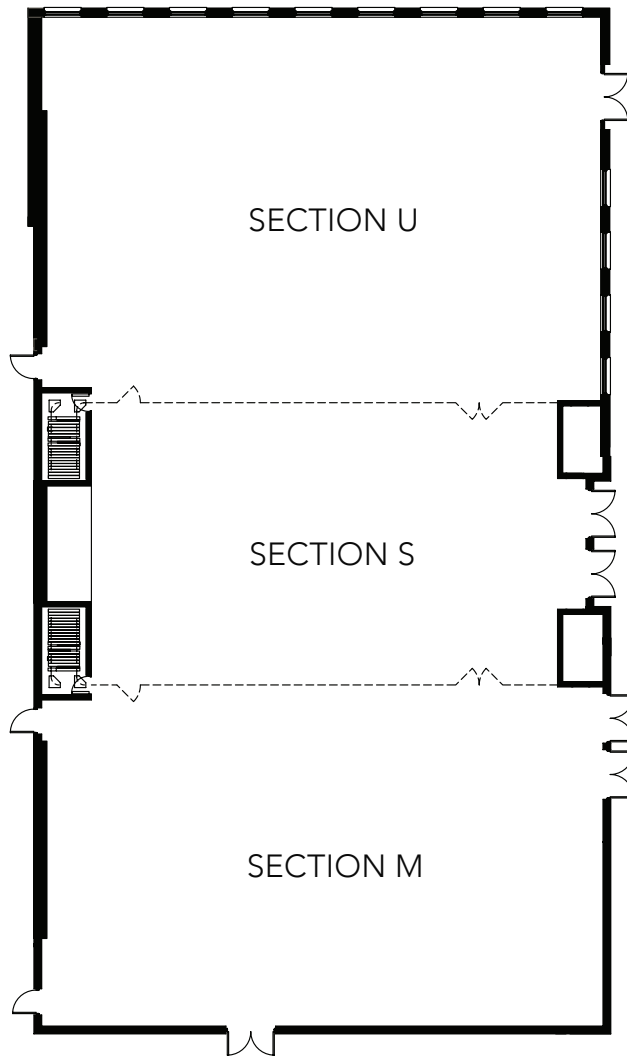
**SALES TEAM**  
Office: 662-325-7300

**MAKE HISTORY.**

# THE GRAND BALLROOM

Our three ballrooms can be combined to form our Grand Ballroom, which offers 8,928 total square feet of space and accommodates up to 1,000 people. Choose one, two, or all three spaces to fit your specific needs.

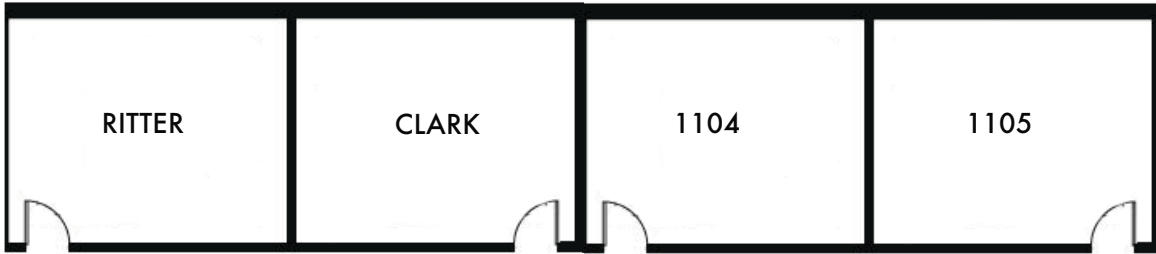
NAME	SIZE	SQ. FT.	THEATRE	CLASSROOM	U-SHAPE	BANQUET	RECEPTION
THE GRAND BALLROOM	72' X 124'	8,928	900	550	222	600	1000
SECTION U	72' X 48'	3,240	390	216	80	192	152
SECTION S	72' X 36'	2,592	270	174	64	144	114
SECTION M	72' X 45'	3,096	370	204	76	192	152



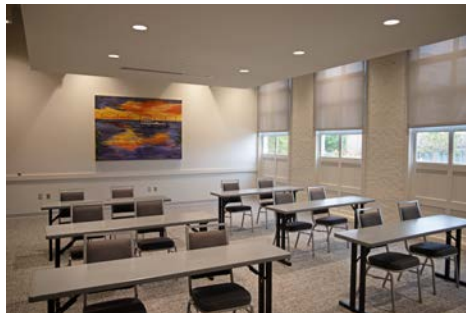
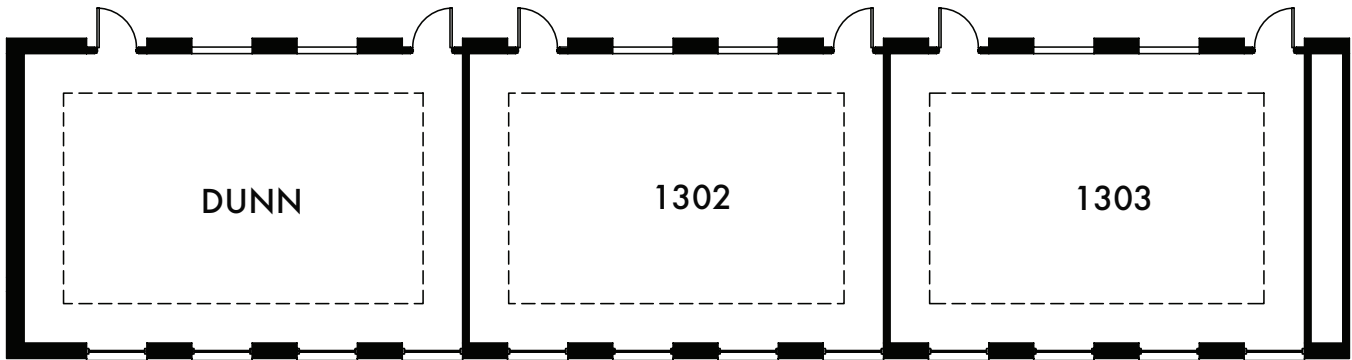
# CONFERENCE ROOMS

The Mill offers three large conference rooms that measure approximately 800 square feet. Each can accommodate up to 48 people with classroom seating or 80 with theater seating. Our two small conference rooms are approximately 300 square feet each, and provide seating for 18 people with classroom seating and 30 with theater seating.

NAME	SIZE	SQ. FT.	THEATRE	CLASSROOM	U-SHAPE	BANQUET	RECEPTION
DUNN CONFERENCE ROOM	33' X 28'8"	950	60	57	29	40	20
1302/1303 CONFERENCE ROOMS	32' X 25'	800	60	57	29	40	20
RITTER/CLARK/1104/1105	20' X 16'3"	325	45	40	18	20	10



## JOHNSON GRAND HALL



# THE CLEVELAND GALLERY

This bright and cheerful room can be set up with banquet seating, classroom, or theater seating. The room's many windows feature shades that can easily be lowered to dim the room when necessary.

NAME	SIZE	SQ. FT.	THEATRE	CLASSROOM	U-SHAPE	BANQUET	RECEPTION
THE CLEVELAND GALLERY	25' X 52'	1,300	200	150	75	120	100

